

TRUE MODELS



Babs Minkman

180 | 84 / 61 / 92 / 39.5 | Blond / Green Blue

TRUE MODELS



</ At the heart of some kind of flower >



< ONE STEP >

Bella wears yellow gold single earrings with pearl ECQUANTICA. Grand printed vintage ASOS, one size over. She wears a gold necklace with a pearl pendant and a gold ring with a pearl pendant. She wears a gold necklace with a pearl pendant and a gold ring with a pearl pendant. She wears a gold necklace with a pearl pendant and a gold ring with a pearl pendant.

HELI RETRO DREPH
by **SCIP**

/ THIS MUST BE THE PLACE

</ Every breath that whispers your name
It's like emeralds on the pavement >



< SEE STEEL >

Bella wears jewelry by GORGIANO BIANCHI. Jacket with the printing by UGO VIGNOTTI. Blue leather CALVIN KLEIN, yellow neck under ADRIANO ORLANDI, metal scarf DESIGN, blue leather bag by STELLA MCCARTNEY, ash ISABELLE MARANT, shoes by mother ASOS and sandals MANIFES MANARA.

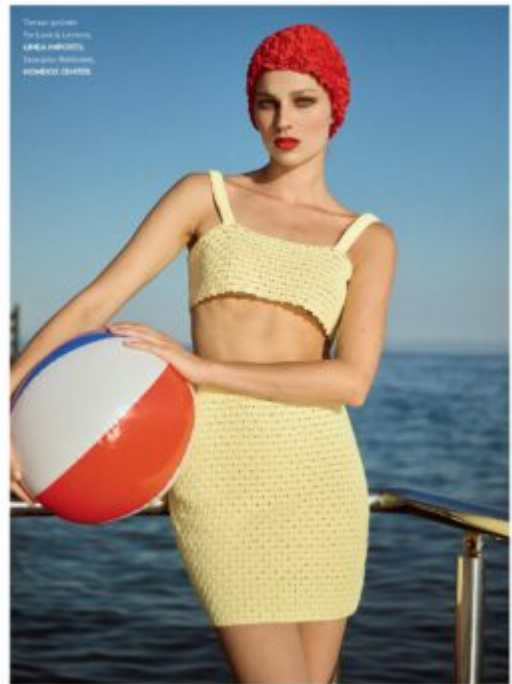
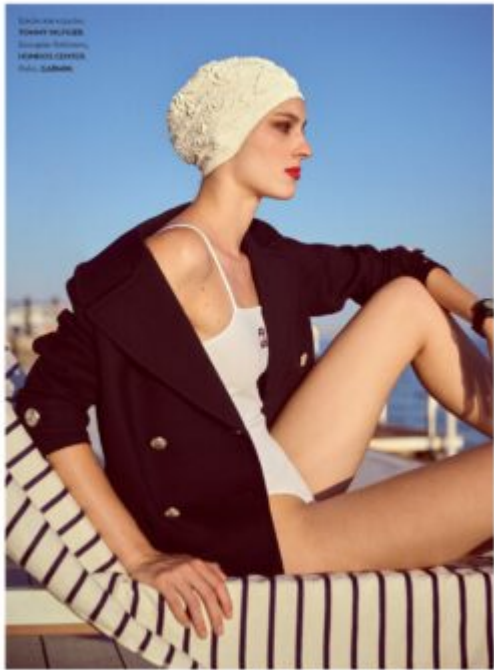
HELI RETRO DREPH
by **SCIP**

/ THIS MUST BE THE PLACE

Babs Minkman

180 | 84 / 61 / 92 / 39.5 | Blond / Green Blue

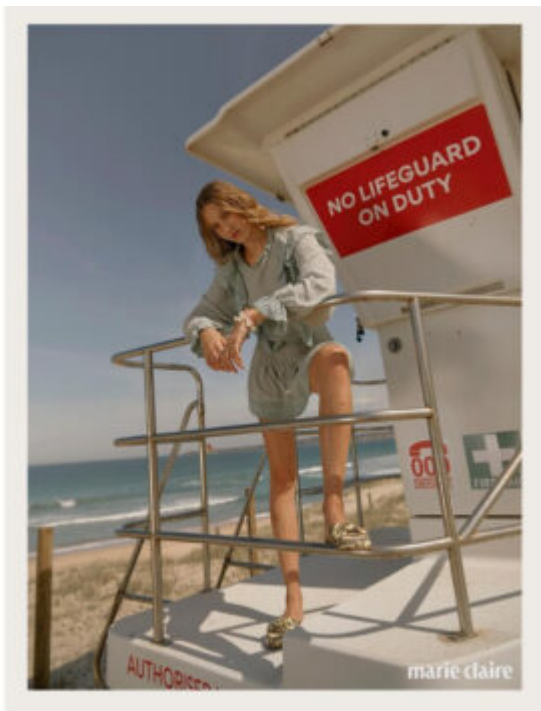
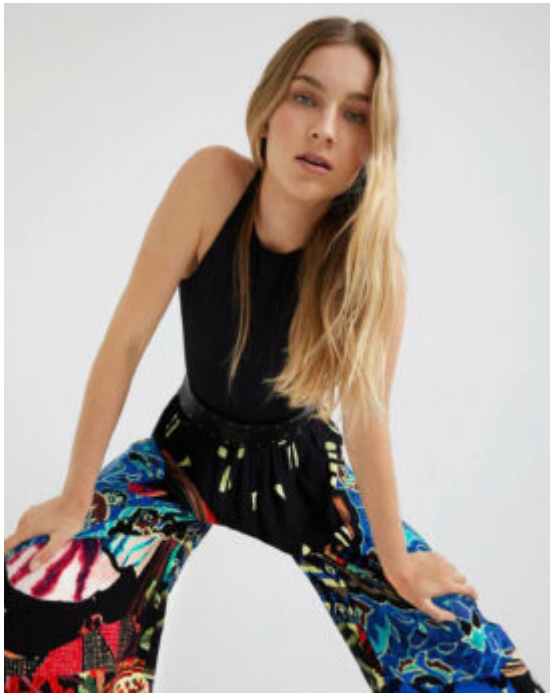
TRUE MODELS



Babs Minkman

180 | 84 / 61 / 92 / 39.5 | Blond / Green Blue

TRUE MODELS



Babs Minkman

180 | 84 / 61 / 92 / 39.5 | Blond / Green Blue

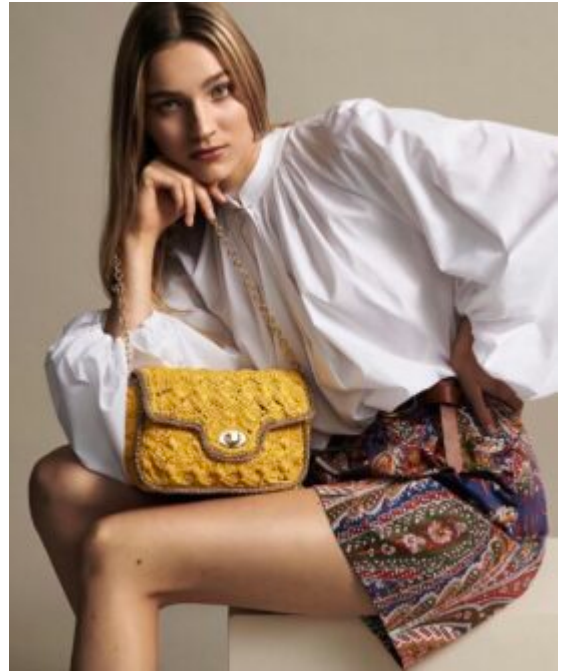
TRUE MODELS



Babs Minkman

180 | 84 / 61 / 92 / 39.5 | Blond / Green Blue

TRUE MODELS



Babs Minkman

180 | 84 / 61 / 92 / 39.5 | Blond / Green Blue

TRUE MODELS

