

TRUE MODELS



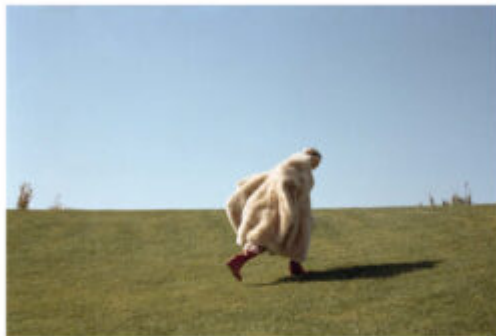
Eli Semerenskaia

173 | 76 / 56 / 87 / 38.5 | Blond / Blue Gray

TRUE MODELS



DRESSCODE



Allegri y otros de CALINE, modelo de RED YOUNG, diseño de GUCCI y HYUNDAI.

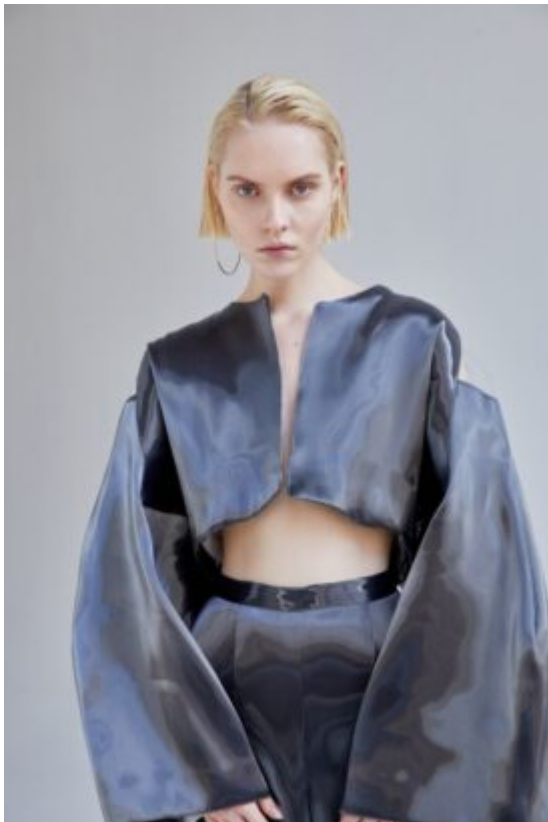
111 | L'ESPRESSO | Noviembre 2014



Eli Semerenskaia

173 | 76 / 56 / 87 / 38.5 | Blond / Blue Gray

TRUE MODELS



Eli Semerenskaia

173 | 76 / 56 / 87 / 38.5 | Blond / Blue Gray

TRUE MODELS



Eli Semerenskaia

173 | 76 / 56 / 87 / 38.5 | Blond / Blue Gray