

# TRUE MODELS



**Masha**

180.5 | 86 / 61 / 90 / 41.5 | Brown / Green

# TRUE MODELS



## Fetish Couture

Photography: Javier Lopez  
Fashion stylist: Jose Herrera  
Makeup: Marina Garcia (MNC)  
Hair & nails: Juan Carlos (Scorcher)  
Hair & makeup assistant: Miguel Angel Gomez  
Styling assistant: Frank Jyrie

Shoes: ZURAB MURAD  
Lingerie: COCO LATE LATEX  
Shoes: ZARA



## Masha

180.5 | 86 / 61 / 90 / 41.5 | Brown / Green

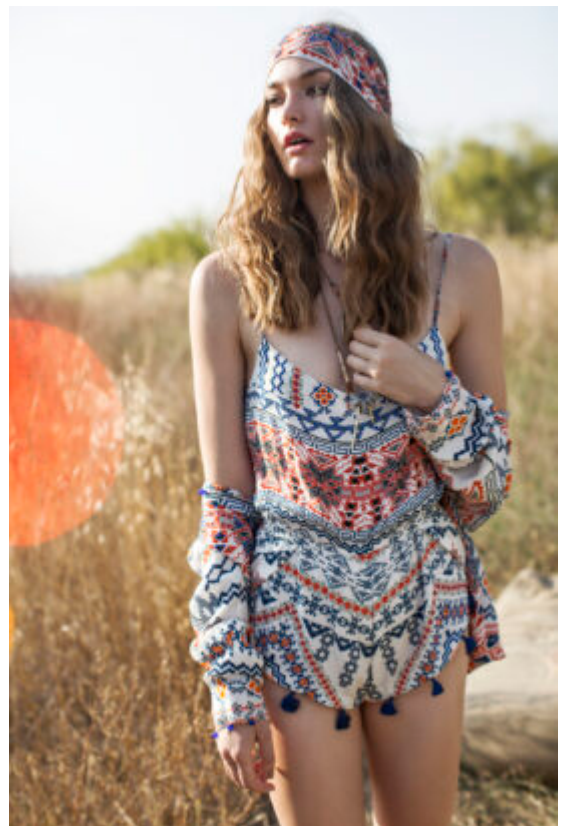
# TRUE MODELS



## Masha

180.5 | 86 / 61 / 90 / 41.5 | Brown / Green

# TRUE MODELS



## Masha

180.5 | 86 / 61 / 90 / 41.5 | Brown / Green

# TRUE MODELS



## Masha

180.5 | 86 / 61 / 90 / 41.5 | Brown / Green